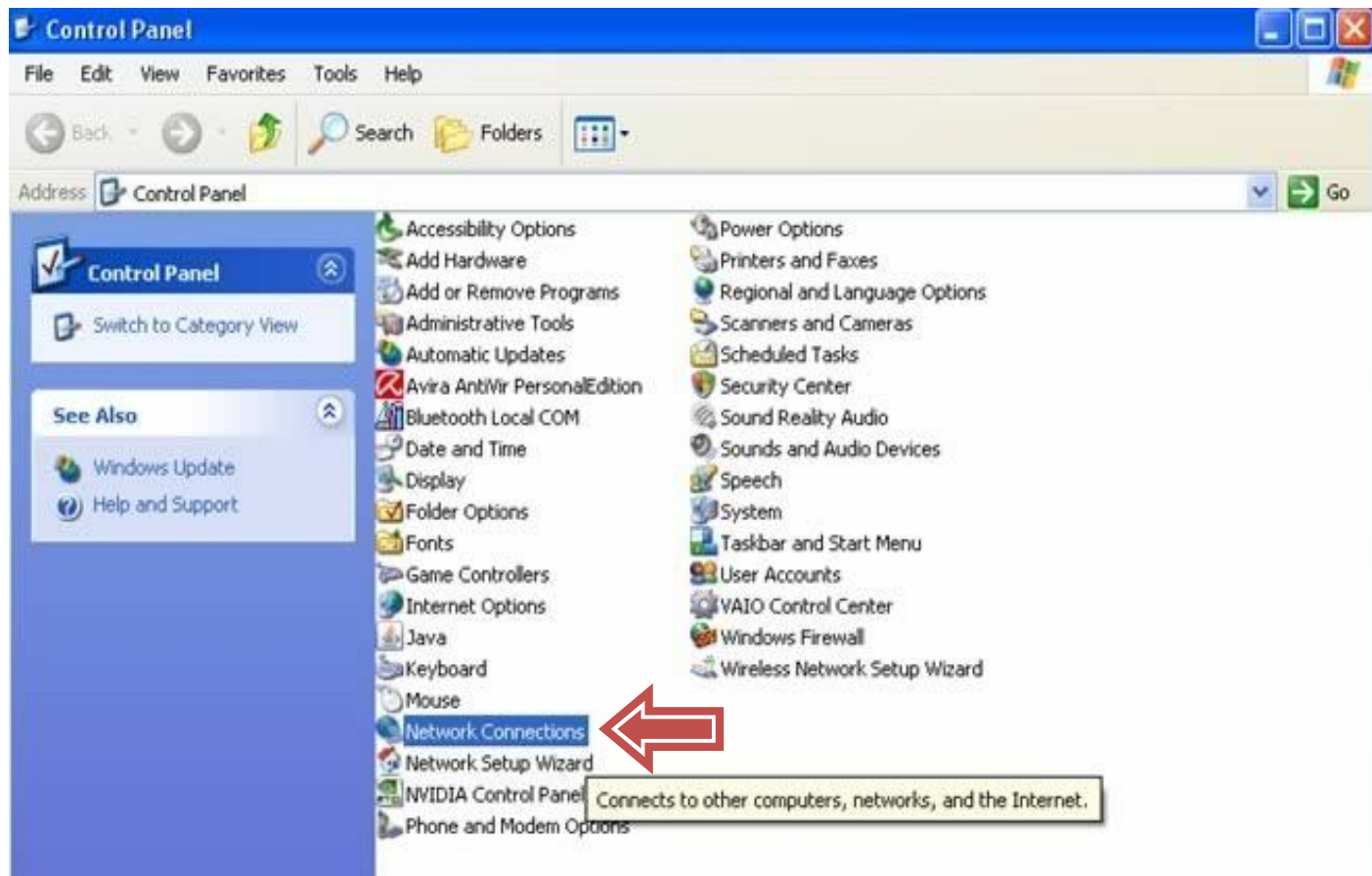


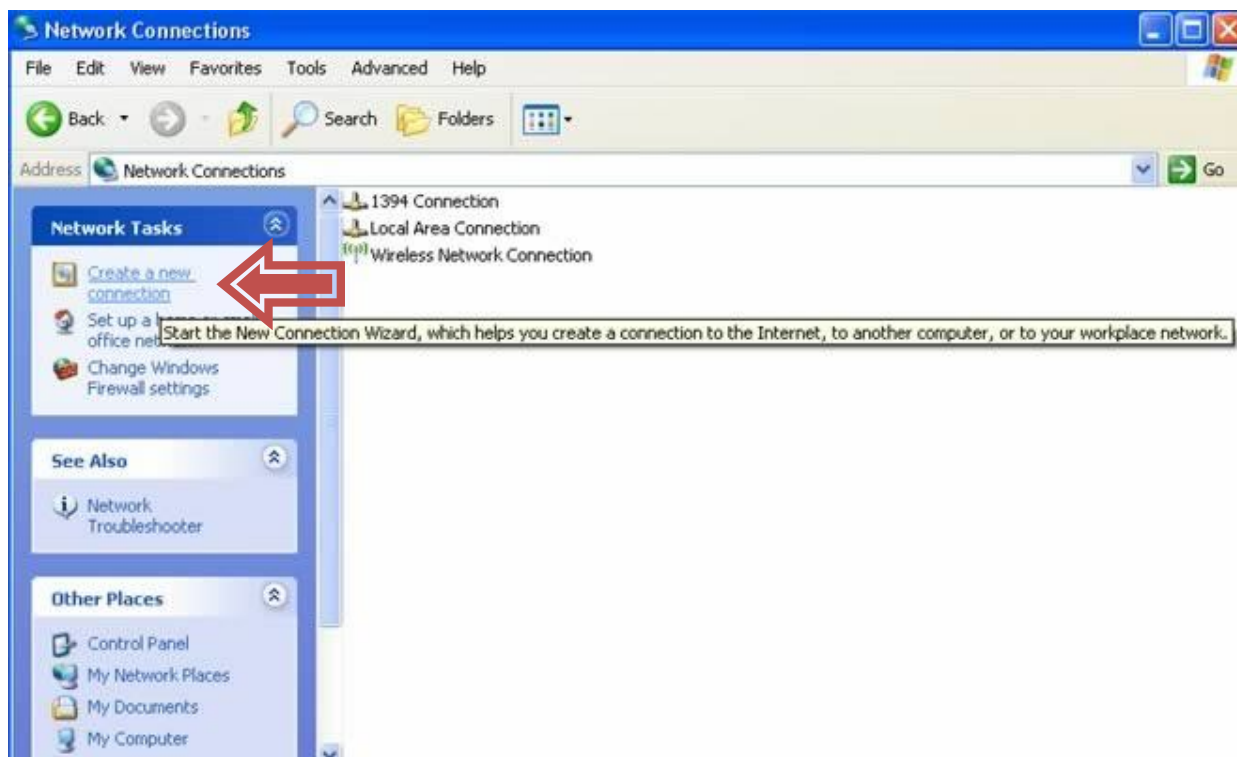


مراحل نصب PPPOE بروی ویندوز XP :

۱,۱. در Control panel گزینه Network connections را انتخاب کنید :



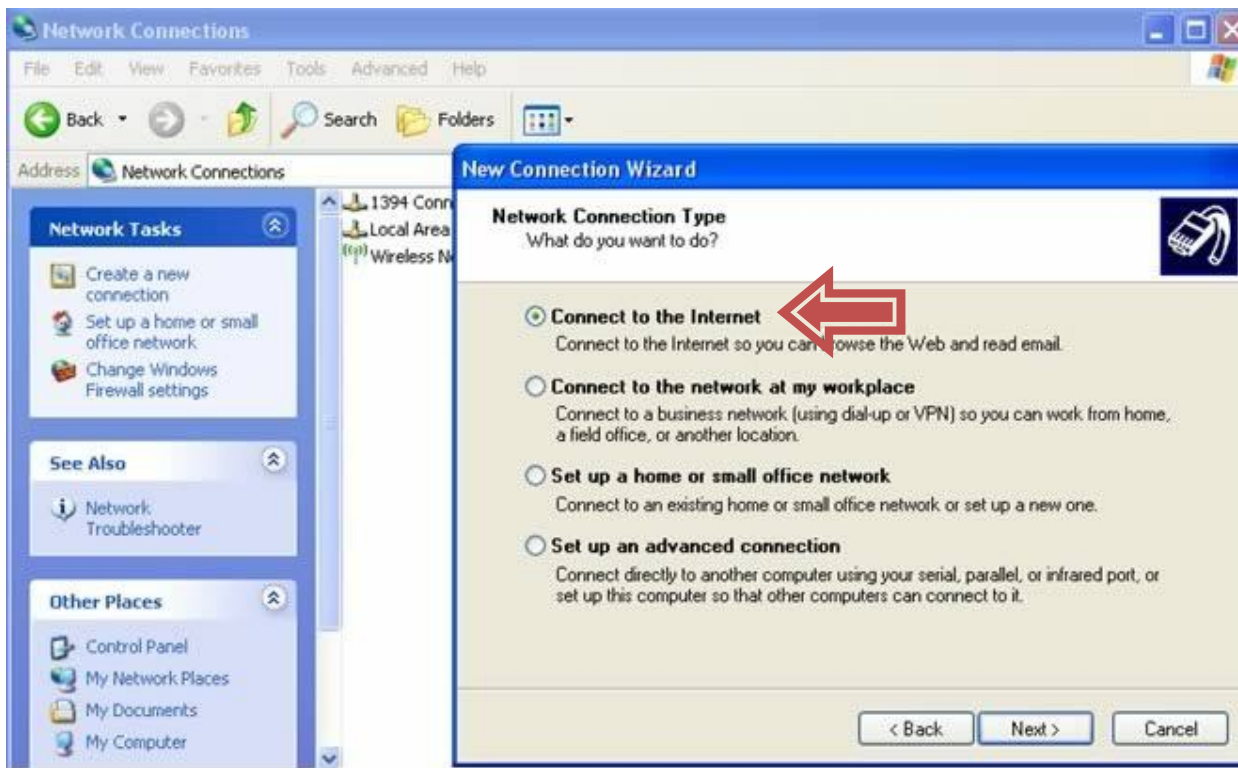
۱,۲. سپس گزینه "Create a new connection" :



Next ۱,۳. بزنید :



۱, ۴. و گزینه "Connect to the Internet" را انتخاب نمایید :



۱,۵. سپس گزینه " setup my connection manually " :



New Connection Wizard

Getting Ready
The wizard is preparing to set up your Internet connection.

How do you want to connect to the Internet?

- ☐ Choose from a list of Internet service providers (ISPs)
- ☒ **Set up my connection manually** 
For a dial-up connection, you will need your account name, password, and a phone number for your ISP. For a broadband account, you won't need a phone number.
- ☐ Use the CD I got from an ISP

< Back Next > Cancel

۱, ۶. بعد هم گزینه "connect using a broadband connection..." را انتخاب کنید:



New Connection Wizard

Internet Connection
How do you want to connect to the Internet?

☐ **Connect using a dial-up modem**
This type of connection uses a modem and a regular or ISDN phone line.

☒ **Connect using a broadband connection that requires a user name and password**
This is a high-speed connection using either a DSL or cable modem. Your ISP may refer to this type of connection as PPPoE.

☐ **Connect using a broadband connection that is always on**
This is a high-speed connection using either a cable modem, DSL or LAN connection. It is always active, and doesn't require you to sign in.

< Back Next > Cancel



۱،۷. در این مرحله ISP name را وارد کنید:



New Connection Wizard

Connection Name
What is the name of the service that provides your Internet connection?

Type the name of your ISP in the following box.

ISP Name

dorna

The name you type here will be the name of the connection you are creating.

< Back Next > Cancel

۱,۸. سپس username و password را وارد و Next کنید :

New Connection Wizard

Internet Account Information
You will need an account name and password to sign in to your Internet account.

Type an ISP account name and password, then write down this information and store it in a safe place. (If you have forgotten an existing account name or password, contact your ISP.)

User name: ush

Password: dorna

Confirm password:

☒ Use this account name and password when anyone connects to the Internet from this computer

☒ Make this the default Internet connection

< Back Next > Cancel

راهنمای اتصال به ADSL دانشگاه صنعتی شاهرود



۱,۹. پس از وارد کردن User name و Password گزینه Add a shortcut to this connection to my desktop را فعال و Finish نمایید :



۱,۱۰. حال یک آیکون به همان نامی که شما هنگام ساختن رابط ارتباط وارد کرده اید بروی Desktop شما ظاهر می شود که برای ارتباط با اینترنت تنها کافیست بروی این آیکون دابل کلیک کرده و پس از وارد کردن Username و Password (در صورتی که از قبل وارد نشده باشند) بروی گزینه Connect کلیک نموده به اینترنت متصل شوید :



مرکز کامپیوتر دانشگاه شاهرود