

sql2008

SQL Server 2008 Setup

Setup Support Rules

Setup Support Rules identify problems that might occur when you install SQL Server Setup support files. Failures must be corrected before Setup can continue.

Setup Support Rules

Operation completed. Passed: 6. Failed 0. Warning 0. Skipped 0.

Hide details <<

Re-run

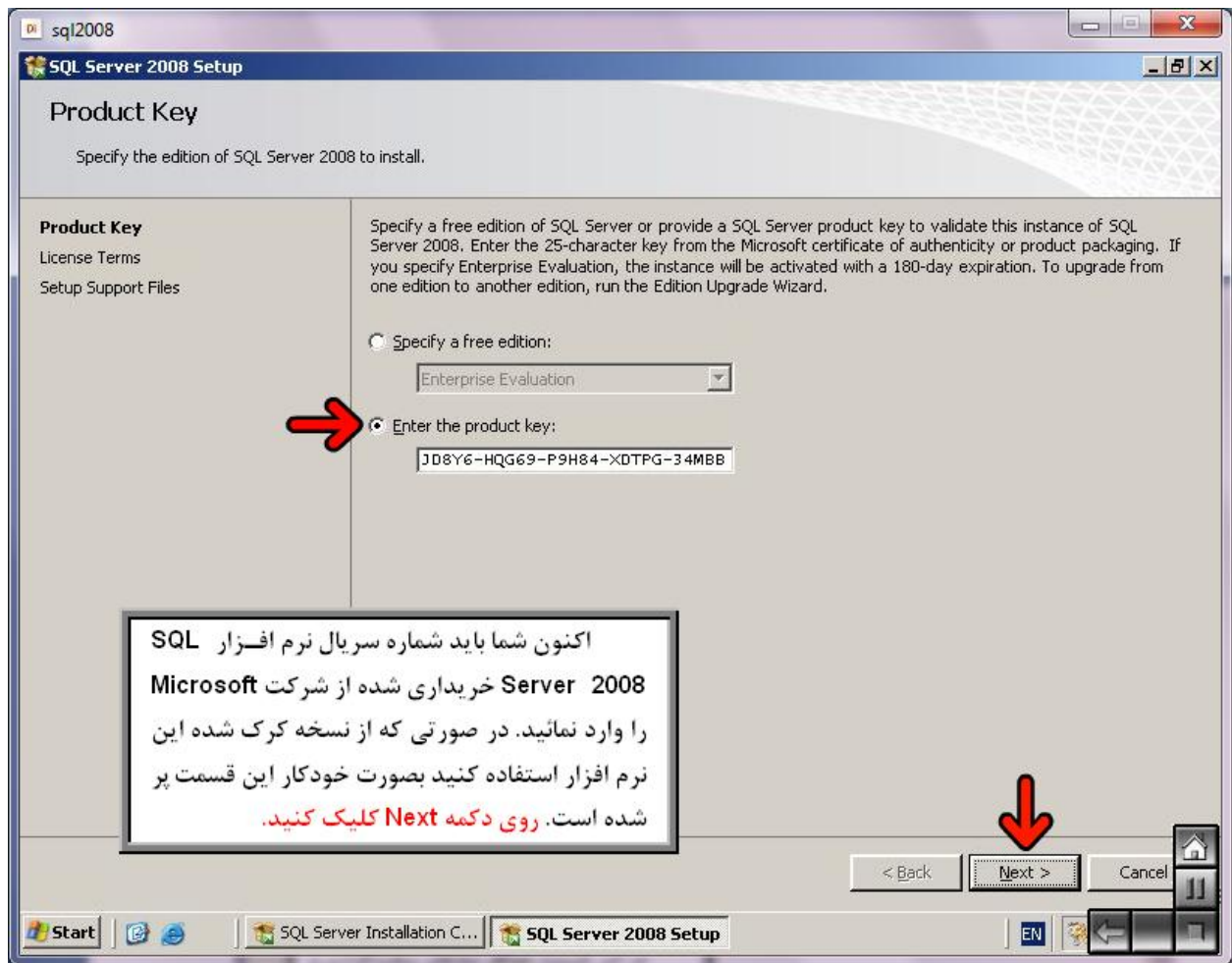
[View detailed report](#)

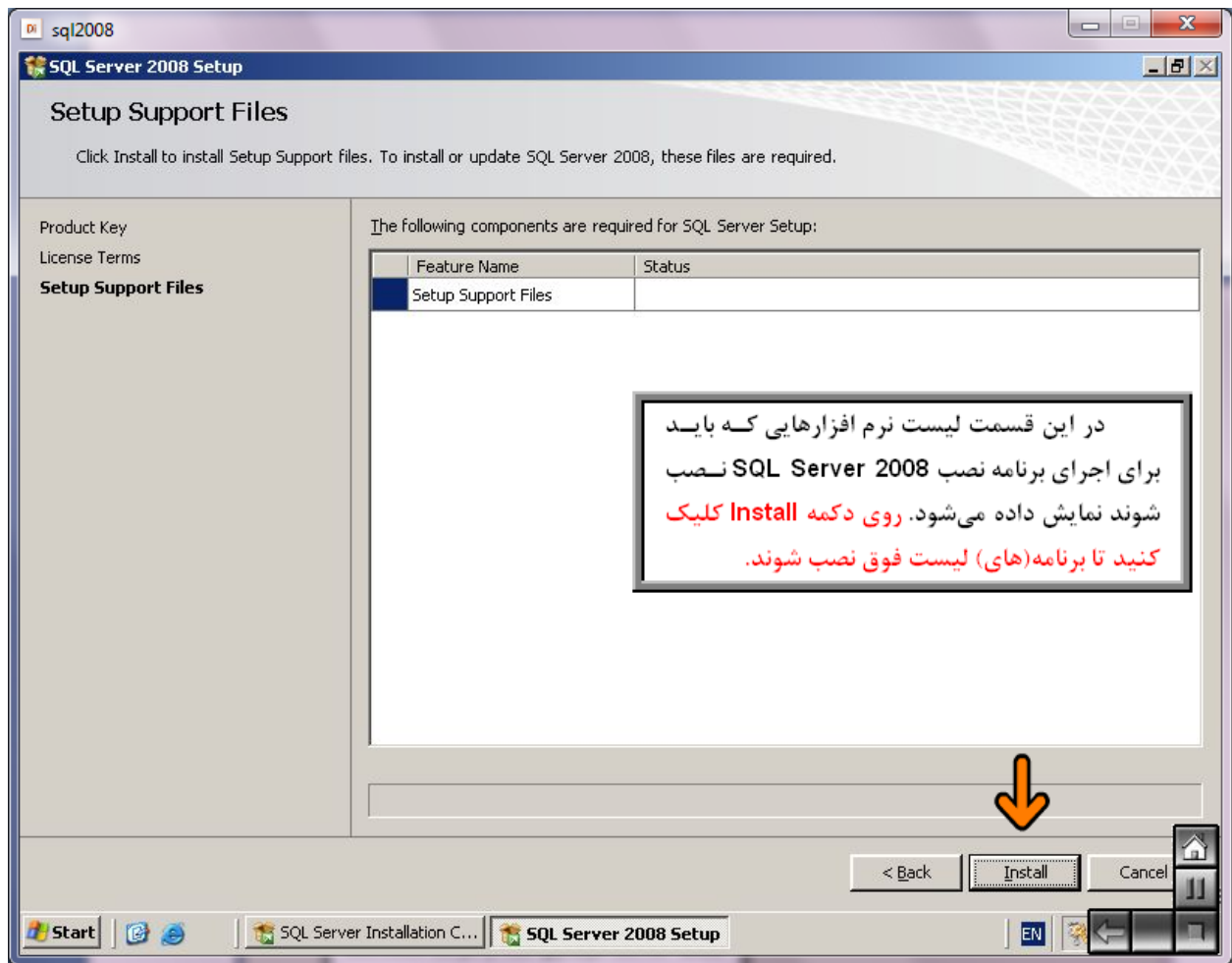
Rule	Status
✓ Minimum operating system version	Passed
✓ Setup administrator	Passed
✓ Restart computer	Passed
✓ Windows Management Instrumentation (WMI) service	Passed
✓ Consistency validation for SQL Server registry keys	Passed
✓ Long path names to files on SQL Server installation media	Passed

در این قسمت حداقل نیازهای سخت افزاری و نرم افزاری سیستم شما بررسی می شود. در صورتی که حداقل های لازم را نداشته باشید برنامه نصب متوقف شده و ادامه پیدا نمی کند. روی دکمه **OK** کلیک کنید.

OK Cancel Help

Start SQL Server Installation C... SQL Server 2008 Setup EN





sql2008

SQL Server 2008 Setup

Setup Support Rules

Setup Support Rules identify problems that might occur when you install SQL Server Setup support files. Failures must be corrected before Setup can continue.

Operation completed. Passed: 10. Failed 0. Warning 0. Skipped 1.

Hide details <<< Re-run

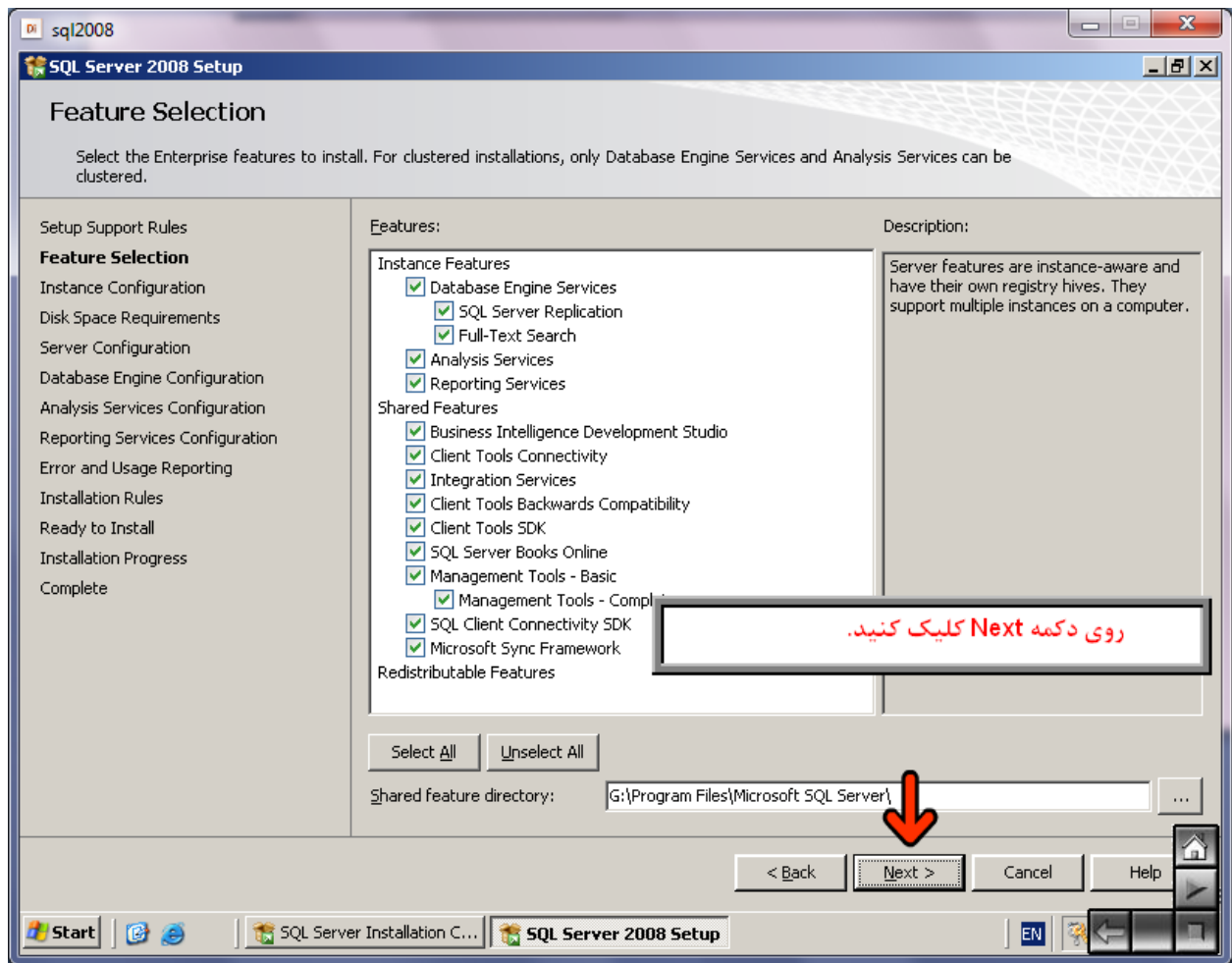
[View detailed report](#)

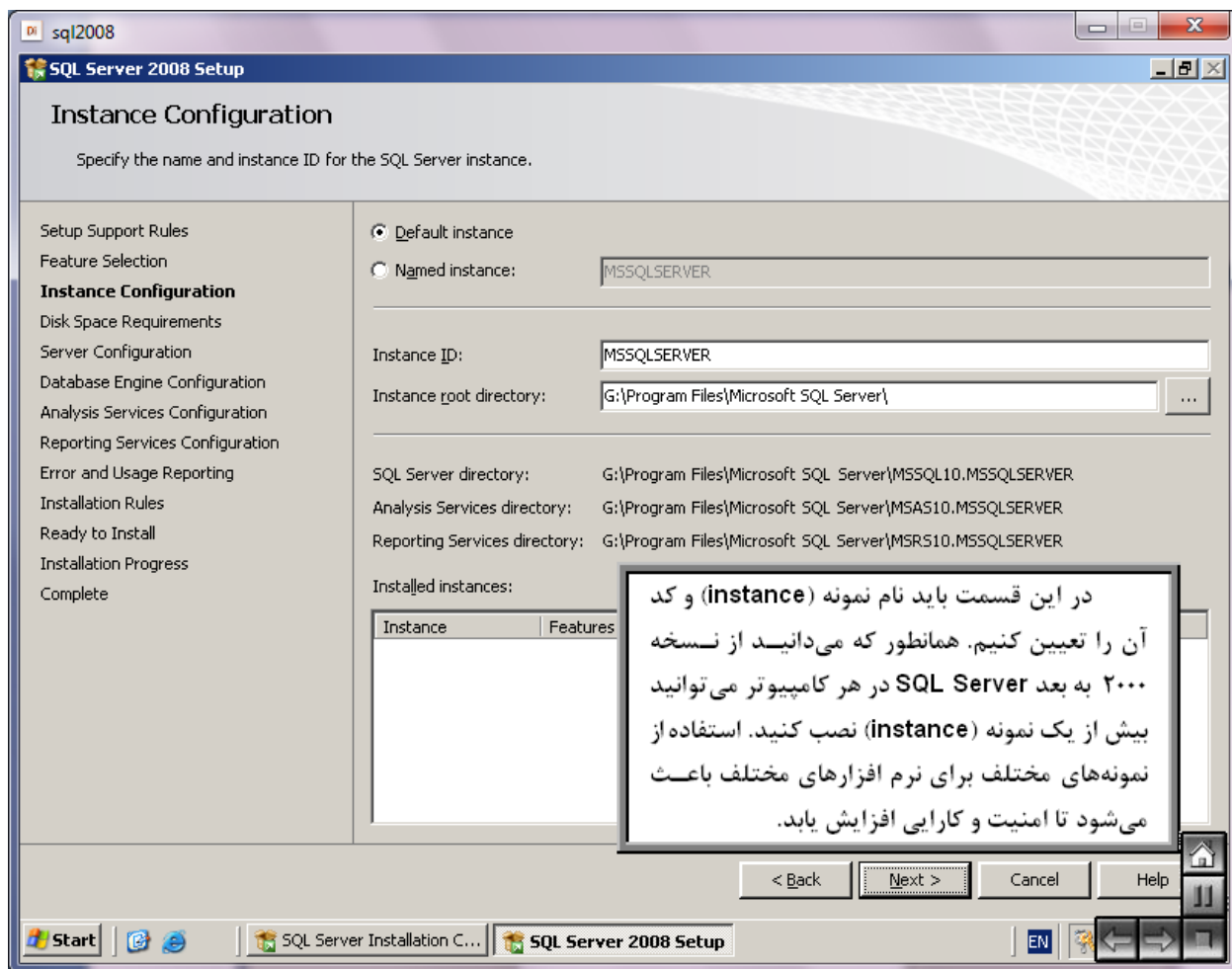
Rule	Status
✓ Fusion Active Template Library (ATL)	Passed
✓ Unsupported SQL Server products	Passed
✓ Performance counter registry hive consistency	Passed
✓ Previous releases of SQL Server 2008 Business Intelligence Develop...	Passed
✓ Previous CTP installation	Passed
✓ Consistency validation for SQL Server registry keys	Passed
Security	Not applicable
	Passed
	Passed

< Back **Next >** Cancel Help

در این قسمت در صورتی که مشکلی در سیستم شما برای نصب وجود داشته باشد خطایی نمایش داده می‌شود. در صورتی که خطا را برطرف نکنید ممکن است بعضی از ویژگیهای SQL Server به خوبی کار نکنند یا نصب نشود. روی دکمه **Next** کلیک کنید.

Start | SQL Server Installation C... | SQL Server 2008 Setup | EN





sql2008

SQL Server 2008 Setup

Instance Configuration

Specify the name and instance ID for the SQL Server instance.

Setup Support Rules
Feature Selection
Instance Configuration
Disk Space Requirements
Server Configuration
Database Engine Configuration
Analysis Services Configuration
Reporting Services Configuration
Error and Usage Reporting
Installation Rules
Ready to Install
Installation Progress
Complete

Default instance
 Named instance: MSSQLSERVER

Instance ID: MSSQLSERVER
Instance root directory: G:\Program Files\Microsoft SQL Server\ ...

SQL Server directory: G:\Program Files\Microsoft SQL Server\MSSQL10.MSSQLSERVER
Analysis Services directory: G:\Program Files\Microsoft SQL Server\MSAS10.MSSQLSERVER
Reporting Services directory: G:\Program Files\Microsoft SQL Server\MSRS10.MSSQLSERVER

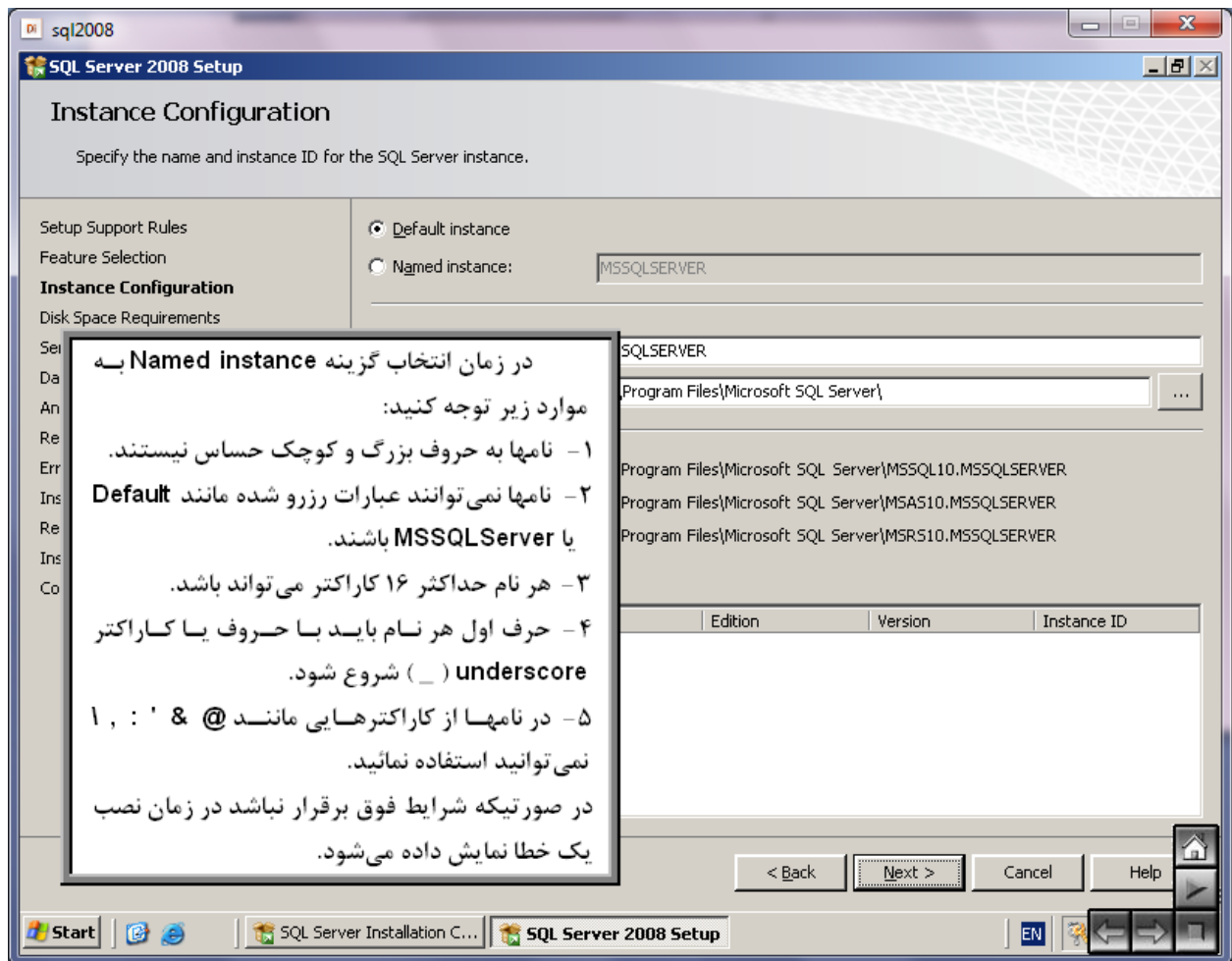
Installed instances:

Instance	Features	Edition	Version	Instance ID
----------	----------	---------	---------	-------------

اکنون گزینه **Default instance** انتخاب شده و بصورت پیش فرض یک نام تعیین شده است. در صورتی که می‌خواهید این نام را تغییر دهید روی گزینه **Name instance** کلیک کرده و نام جدید را وارد کنید.

< Back Next > Cancel Help

Start SQL Server Installation C... SQL Server 2008 Setup EN



sql2008

SQL Server 2008 Setup

Disk Space Requirements

Review the disk space summary for the SQL Server features you selected.

Setup Support Rules
Feature Selection
Instance Configuration
Disk Space Requirements
Server Configuration
Database Engine Configuration
Analysis Services Configuration
Reporting Services Configuration
Error and Usage Reporting
Installation Rules
Ready to Install
Installation Progress
Complete

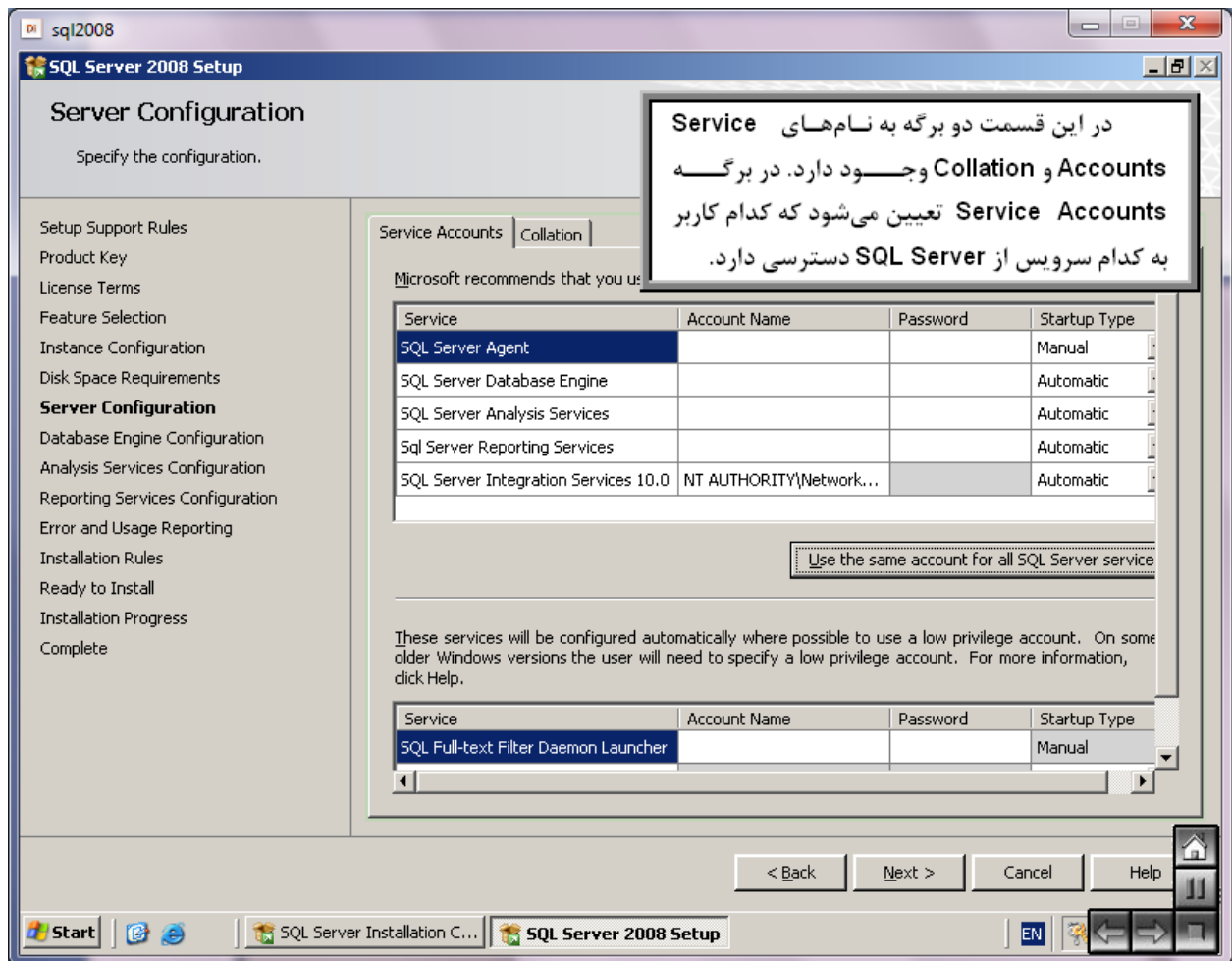
Disk Usage Summary:

- ✓ Drive G: 2684 MB required, 12516 MB available
 - System Drive (G:): 1256 MB required
 - Shared Install Directory (G:\Program Files\Microsoft SQL Server\): 784 MB required
 - Instance Directory (G:\Program Files\Microsoft SQL Server\): 644 MB required

در این قسمت مقدار فضای مورد نیاز و موجود
بر روی هارد دیسک نمایش داده می‌شود. روی دکمه
Next کلیک کنید.

< Back Next > Cancel Help

Start SQL Server Installation C... SQL Server 2008 Setup EN



sql2008

SQL Server 2008 Setup

Server Configuration

Specify the configuration.

- Setup Support Rules
- Product Key
- License Terms
- Feature Selection
- Instance Configuration
- Disk Space Requirements
- Server Configuration**
 - Database Engine Configuration
 - Analysis Services Configuration
 - Reporting Services Configuration
 - Error and Usage Reporting
 - Installation Rules
 - Ready to Install
 - Installation Progress
 - Complete

Service Accounts | Collation

Microsoft recommends that you use a separate account for each SQL Server service.

Service	Account Name	Password	Startup Type
SQL Server Agent			Manual
SQL Server Database Engine			Automatic
SQL Server Analysis Services			Automatic
SQL Server Reporting Services			Automatic
SQL Server Integration Services 10.0	NT AUTHORITY\Network...		Automatic

Use the same account for all SQL Server service

These services will be configured automatically where possible to use a low privilege account. On some older Windows versions the user will need to specify a low privilege account. For more information, click Help.

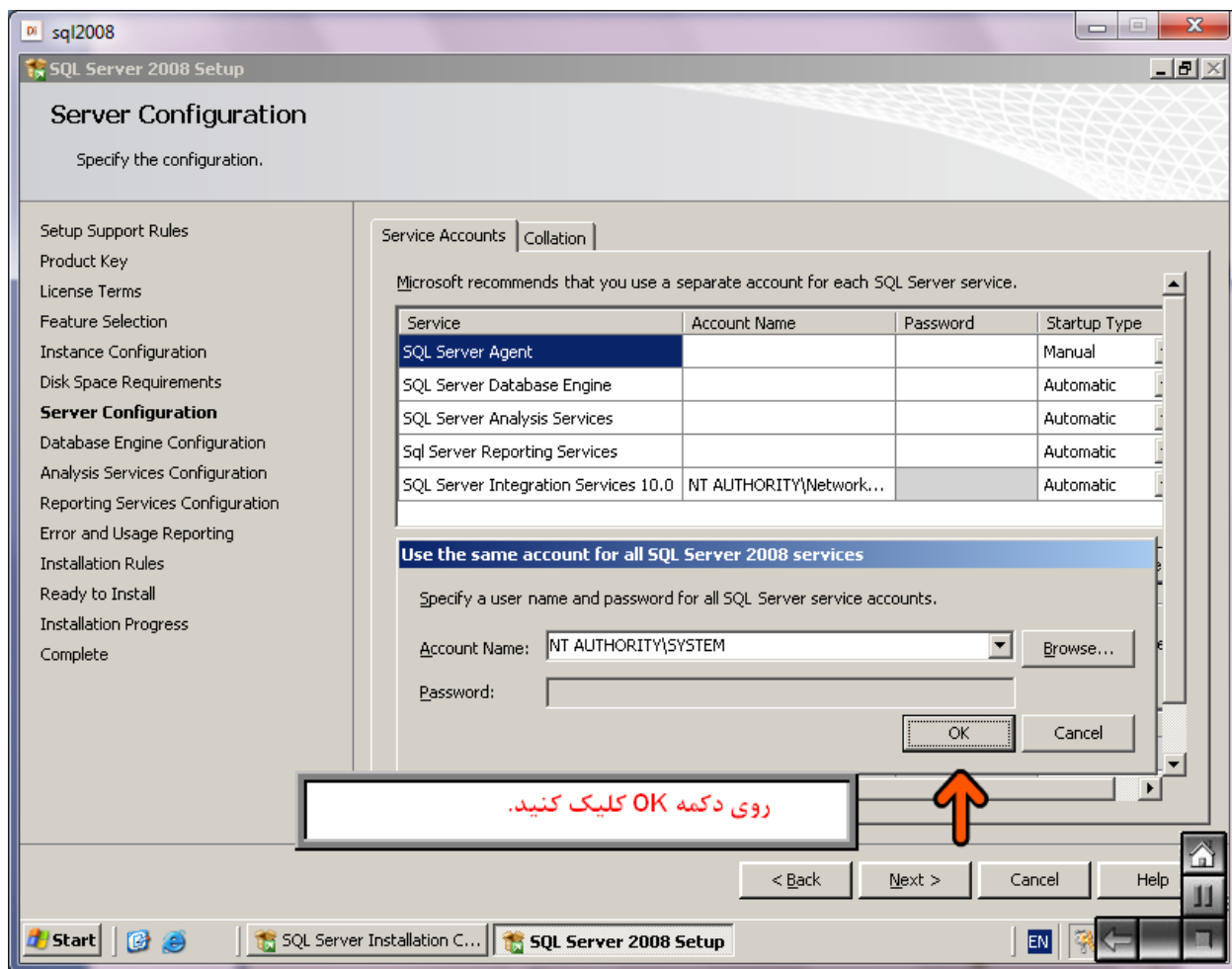
Service	Account Name	Password	Startup Type
SQL Full-text Filter Daemon Launcher			Manual

< Back Next > Cancel Help

Start | SQL Server Installation C... | SQL Server 2008 Setup | EN

در این قسمت می‌خواهیم کاربر System به تمامی این سرویس‌ها دسترسی داشته باشد روی دکمه Use the same account for all SQL Server services کلیک کنید.





sql2008

SQL Server 2008 Setup

Server Configuration

Specify the configuration.

- Setup Support Rules
- Product Key
- License Terms
- Feature Selection
- Instance Configuration
- Disk Space Requirements
- Server Configuration**
- Database Engine Configuration
- Analysis Services Configuration
- Reporting Services Configuration
- Error and Usage Reporting
- Installation Rules
- Ready to Install
- Installation Progress
- Com

Service Accounts Collation

Database Engine:

Arabic_CI_AS


Latin1-General, case-insensitive, accent-sensitive, kanatype-insensitive, width-insensitive for Unicode Data, SQL Server Sort Order 52 on Code Page 1252 for non-Unicode Data

Analysis Services:

Arabic_CI_AS

Latin1-General, case-insensitive, accent-sensitive, kanatype-insensitive, width-insensitive

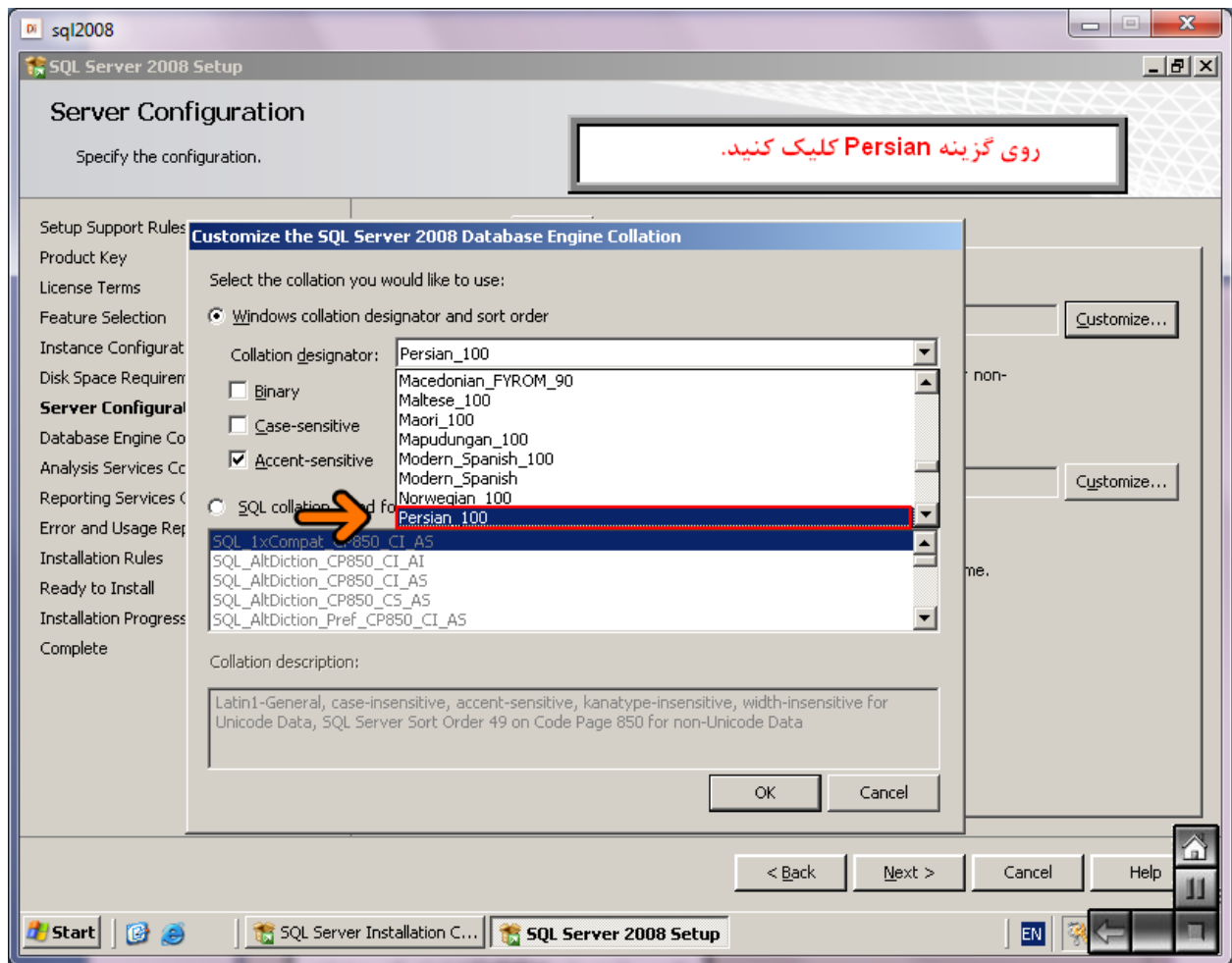
Warning: The Database Engine and Analysis Services collations are not the same.

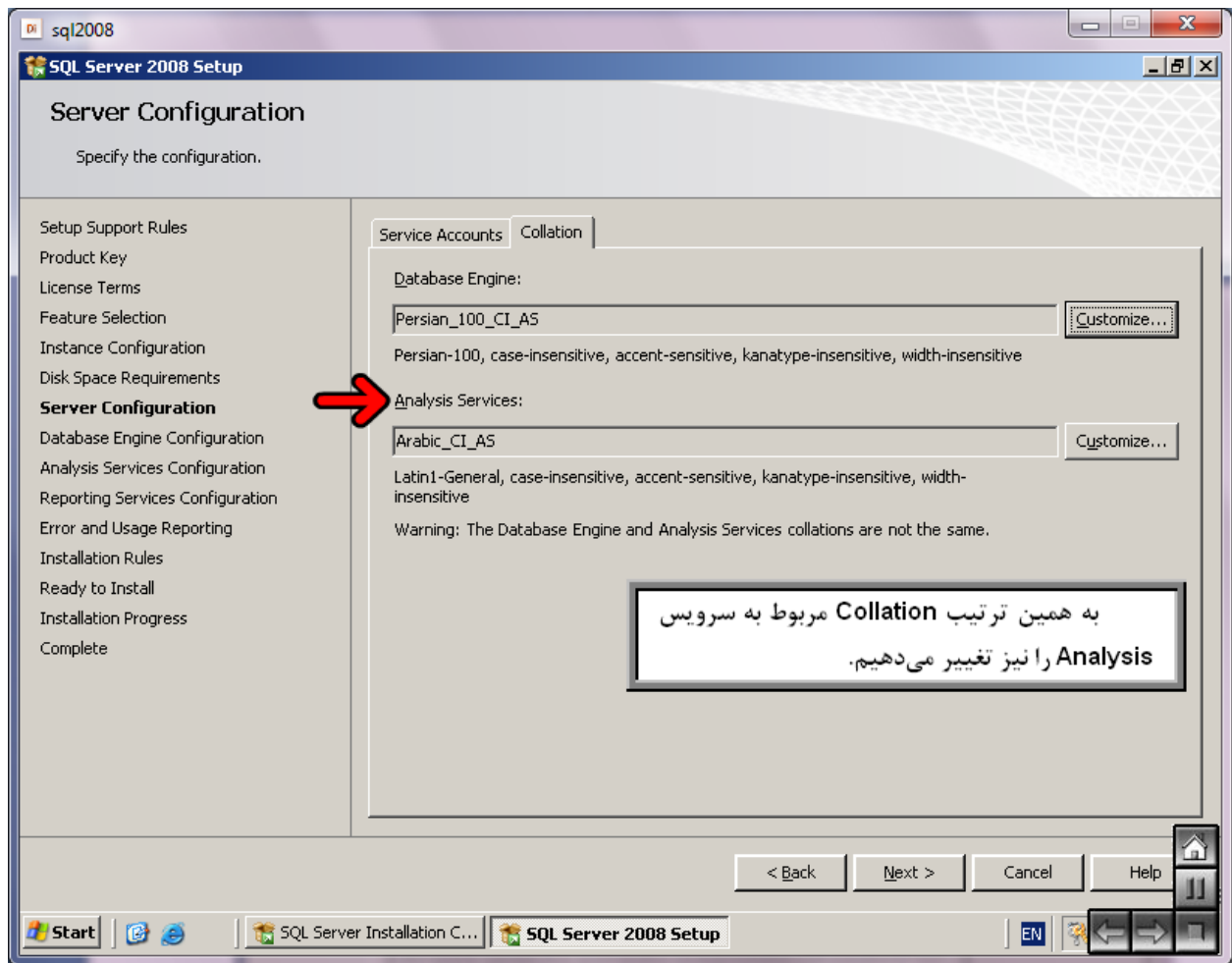


می خواهیم در موتور SQL Server زبان فارسی را بعنوان Collation انتخاب کنیم تا در هنگام ذخیره سازی داده فارسی و مرتب کردن آن مشکلی وجود نداشته باشد. روی دکمه **Customize** کلیک کنید.

< Back Next > Cancel Help

Start SQL Server Installation C... SQL Server 2008 Setup EN





sql2008

SQL Server 2008 Setup

Database Engine Configuration

Specify Database Engine authentication security mode, administrators and data directories.

- Setup Support Rules
- Product Key
- License Terms
- Feature Selection
- Instance Configuration
- Disk Space Requirements
- Server Configuration
- Database Engine Configuration**
- Analysis Services Configuration
- Reporting Services Configuration
- Error and Usage Reporting
- Installation Rules
- Ready to Install
- Installation Progress
- Complete

Account Provisioning | Data Directories | FILESTREAM

Specify the authentication mode and administrators for the Database Engine.

Authentication Mode

- Windows authentication mode
- Mixed Mode (SQL Server authentication and Windows authentication)**

Built-in SQL Server system administrator account

Enter password:

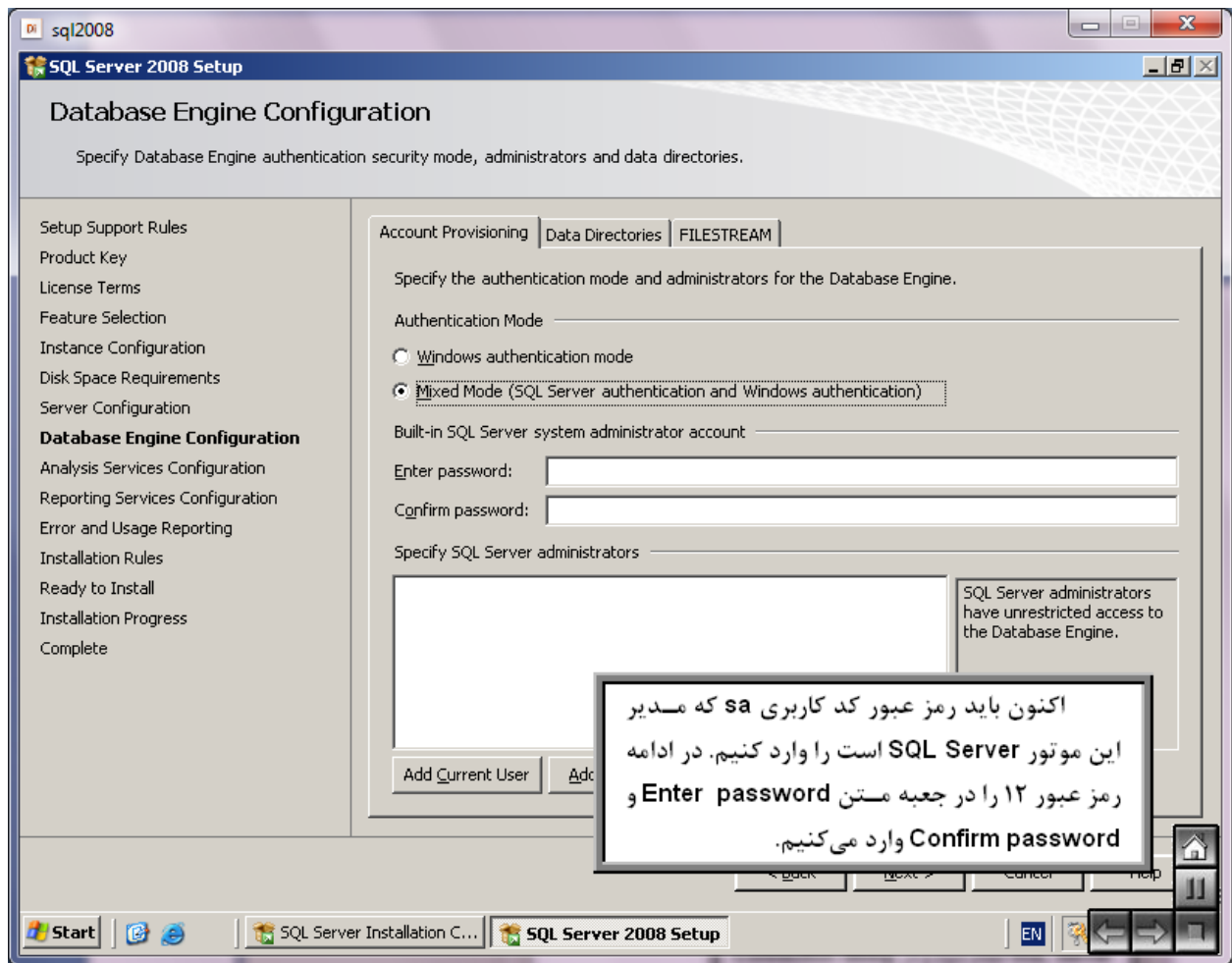
Confirm password:

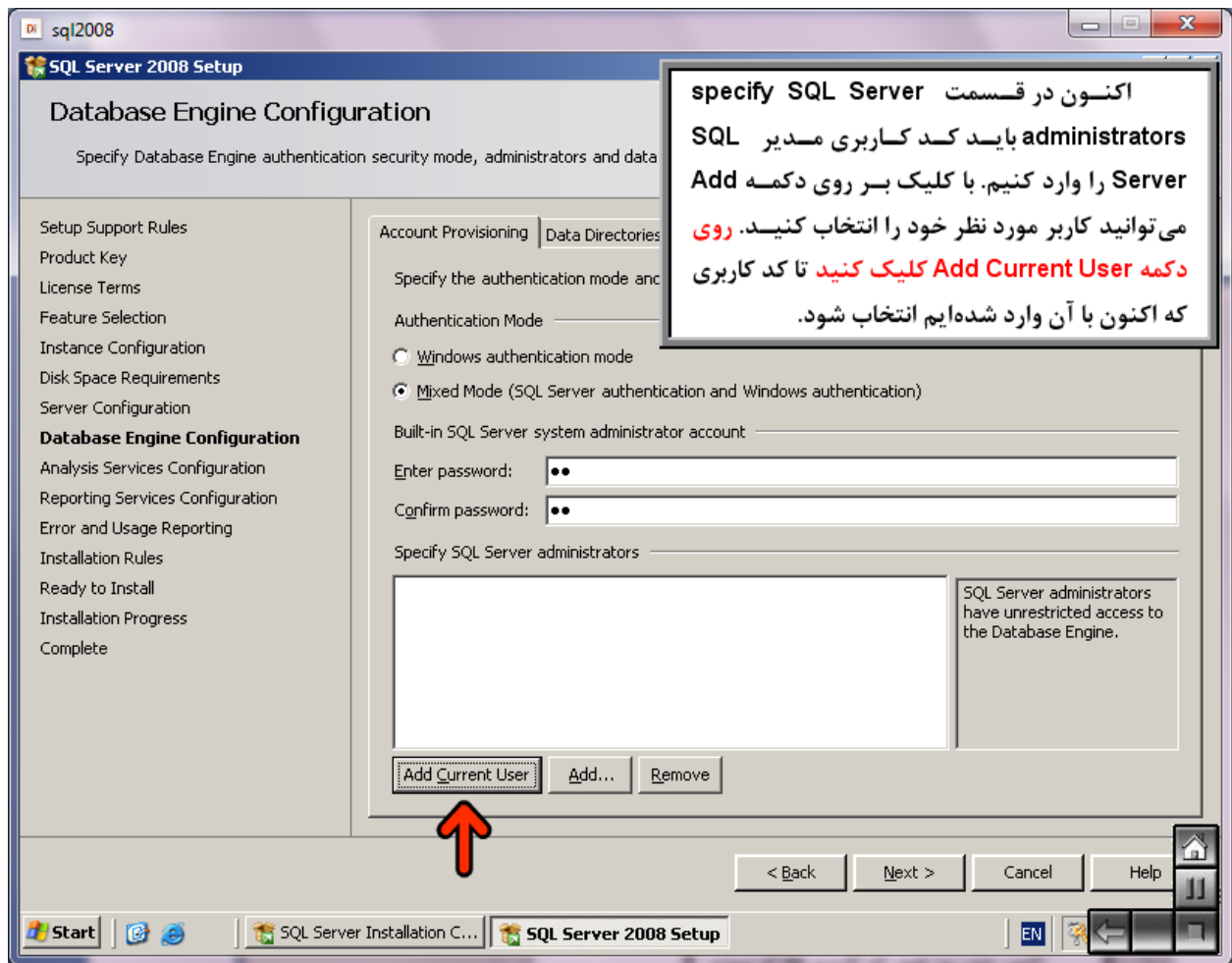
Specify SQL Server administrator

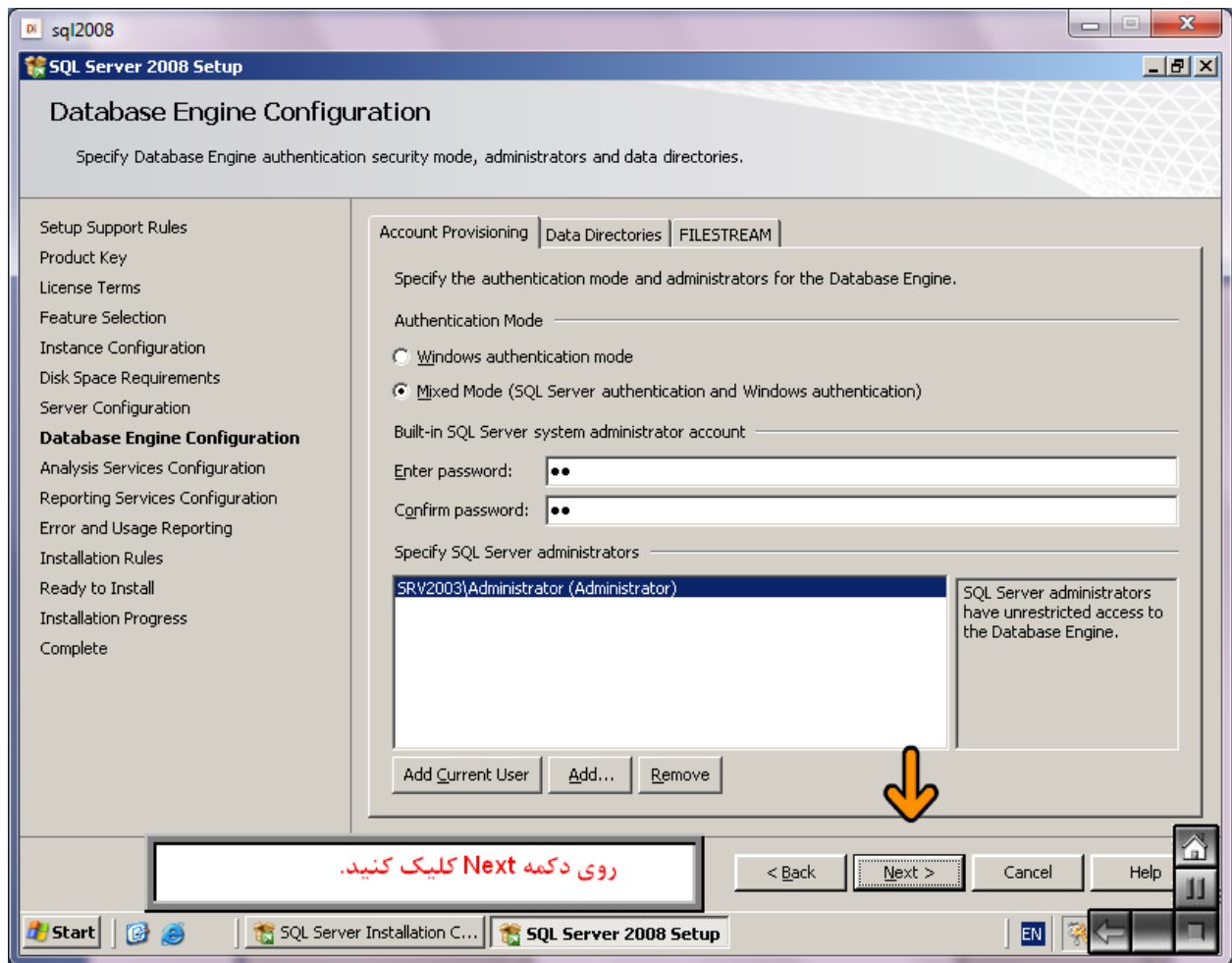
< Back Next > Cancel Help

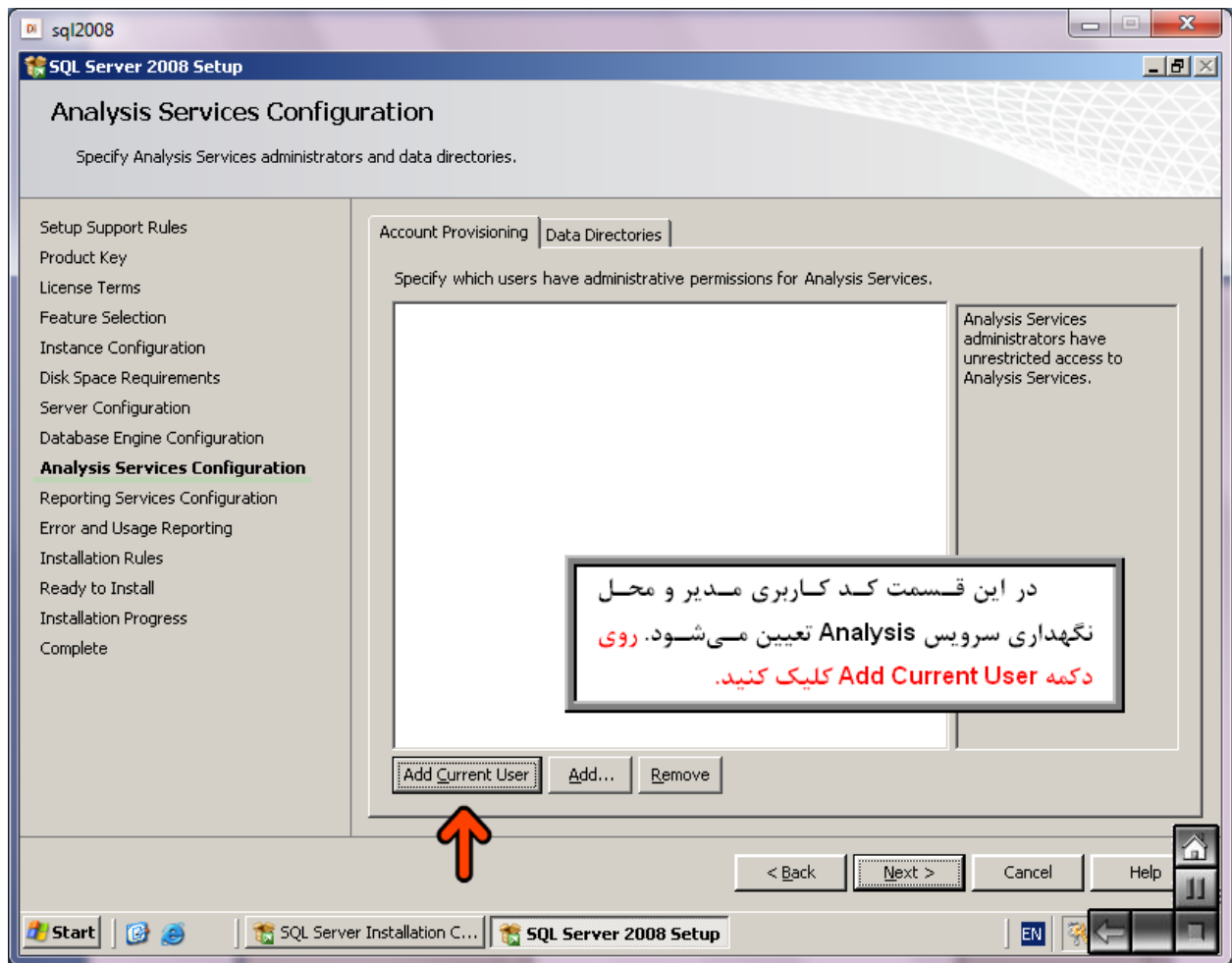
Start | SQL Server Installation C... | SQL Server 2008 Setup

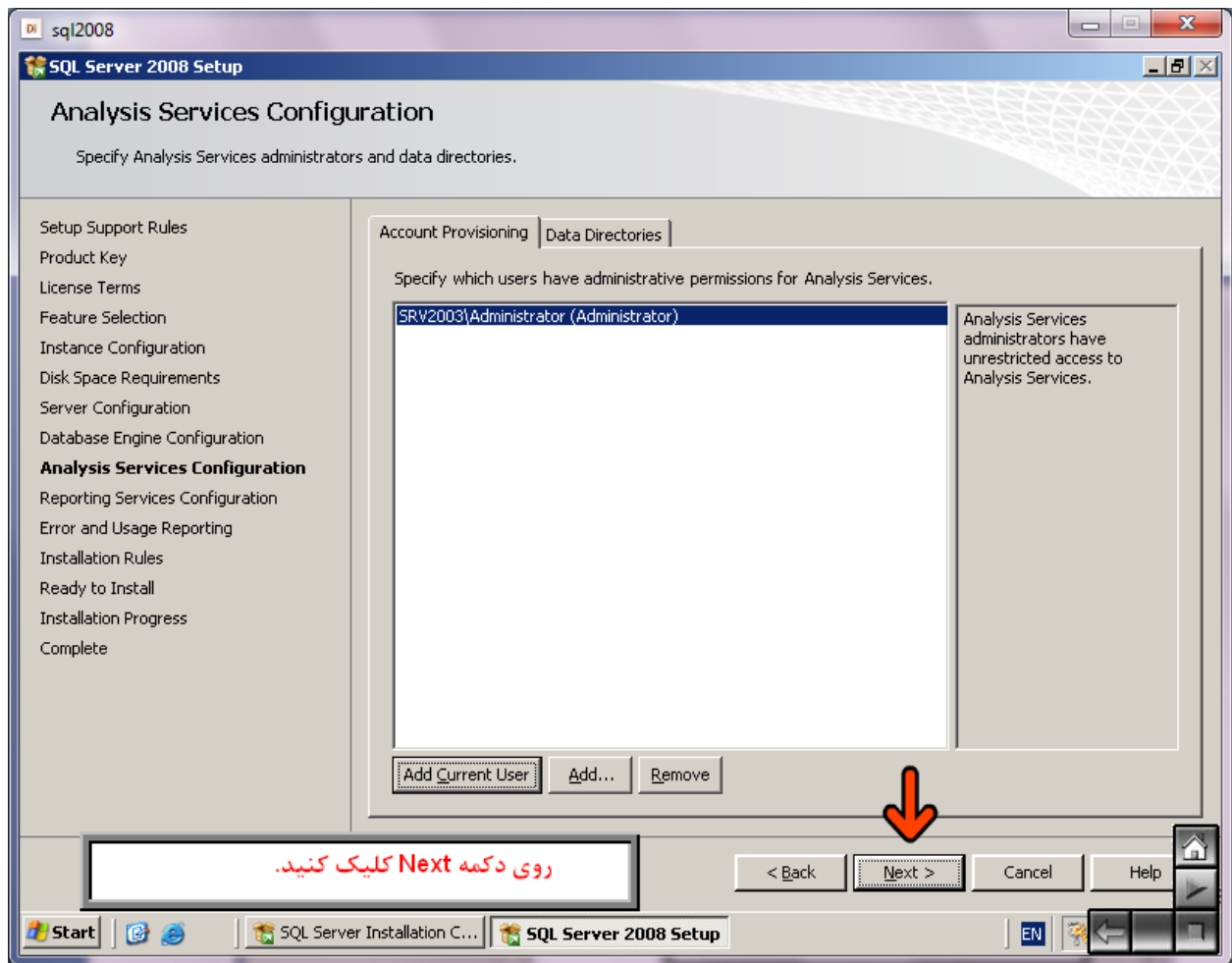
در این قسمت باید نحوه اعتبارسنجی و کد کاربری مدیر موتور این نمونه SQL Server را تعیین کنیم. روی گزینه **Mixed mode** کلیک کنید تا اعتبار سنجی هم از طریق ویندوز و هم از طریق SQL Server انجام شود و در Connection String بتوانیم از این کد کاربری و رمز عبور استفاده کرده و ضریب امنیت را افزایش دهیم.











sql2008

SQL Server 2008 Setup

Reporting Services Configuration

Specify the Reporting Services configuration mode.

- Setup Support Rules
- Product Key
- License Terms
- Feature Selection
- Instance Configuration
- Disk Space Requirements
- Server Configuration
- Database Engine Configuration
- Analysis Services Configuration
- Reporting Services Configuration**
- Error and Usage Reporting
- Installation Rules
- Ready to Install
- Installation Progress
- Complete

Install the native mode default configuration.

Setup will install the report server and configure it in Native mode to use the default values. The report server is usable as soon as Setup is finished.

Install the SharePoint integrated mode default configuration.

Setup will create the report server database in SharePoint integrated mode and configure the report server to use the default values. However, integrated operations will not be supported until a minimal installation of a SharePoint product or technology is deployed on the report server computer and the Reporting Services Add-in for SharePoint Technologies is installed and configured on the instance of the SharePoint product or technology you are using.

Install, but do not configure the report server.

Setup will install, but will not configure, the report server software. After installation is finished, you can use the Reporting Services Configuration tool to set options that are required to run the report server.

↓

در این قسمت می‌توانید سرویس Reporting را تنظیم کنید. روی دکمه Next کلیک کنید.

< Back Next > Cancel Help

Start SQL Server Installation C... SQL Server 2008 Setup EN

sql2008

SQL Server 2008 Setup

Error and Usage Reporting

Help Microsoft improve SQL Server features and services.

Setup Support Rules
Product Key
License Terms
Feature Selection
Instance Configuration
Disk Space Requirements
Server Configuration
Database Engine Configuration
Analysis Services Configuration
Reporting Services Configuration
Error and Usage Reporting
Installation Rules
Ready to Install
Installation Progress
Complete

Specify the information that you would like to send to Microsoft. These settings are optional. Updates will be provided through Microsoft Update and installed on your machine automatically.

[View the Microsoft policy for SQL Server.](#)

[Read more about Microsoft Update and Automatic Update.](#)

Send Windows and SQL Server Error Reports to Microsoft or your corporate report server. This setting only applies to services that run without user interaction.

Send feature usage data to Microsoft. Feature usage data includes information about your hardware configuration and how you use Microsoft software and services.

در این قسمت در صورتی که گزینه‌های موجود را انتخاب کنید یک سری اطلاعات برای شرکت Microsoft ارسال خواهد شد تا در نسخه‌های بعدی کارایی و ویژگی‌های SQL Server افزایش یابد و در صورتی که خطایی رخ داد، این خطا بصورت خودکار برای بررسی به شرکت Microsoft ارسال می‌شود.
روی دکمه Next کلیک کنید.

< Back **Next >** Cancel Help

Start SQL Server Installation C... SQL Server 2008 Setup EN

sql2008

SQL Server 2008 Setup

Installation Rules

Setup is running rules to determine if the installation process will be blocked. F

در این قسمت بررسی شده است که برنامه Setup در حین کار به مشکلی برخورد نکند. روی دکمه Next کلیک کنید.

Operation completed. Passed: 11, Failed 0, Warning 0, Skipped 0.

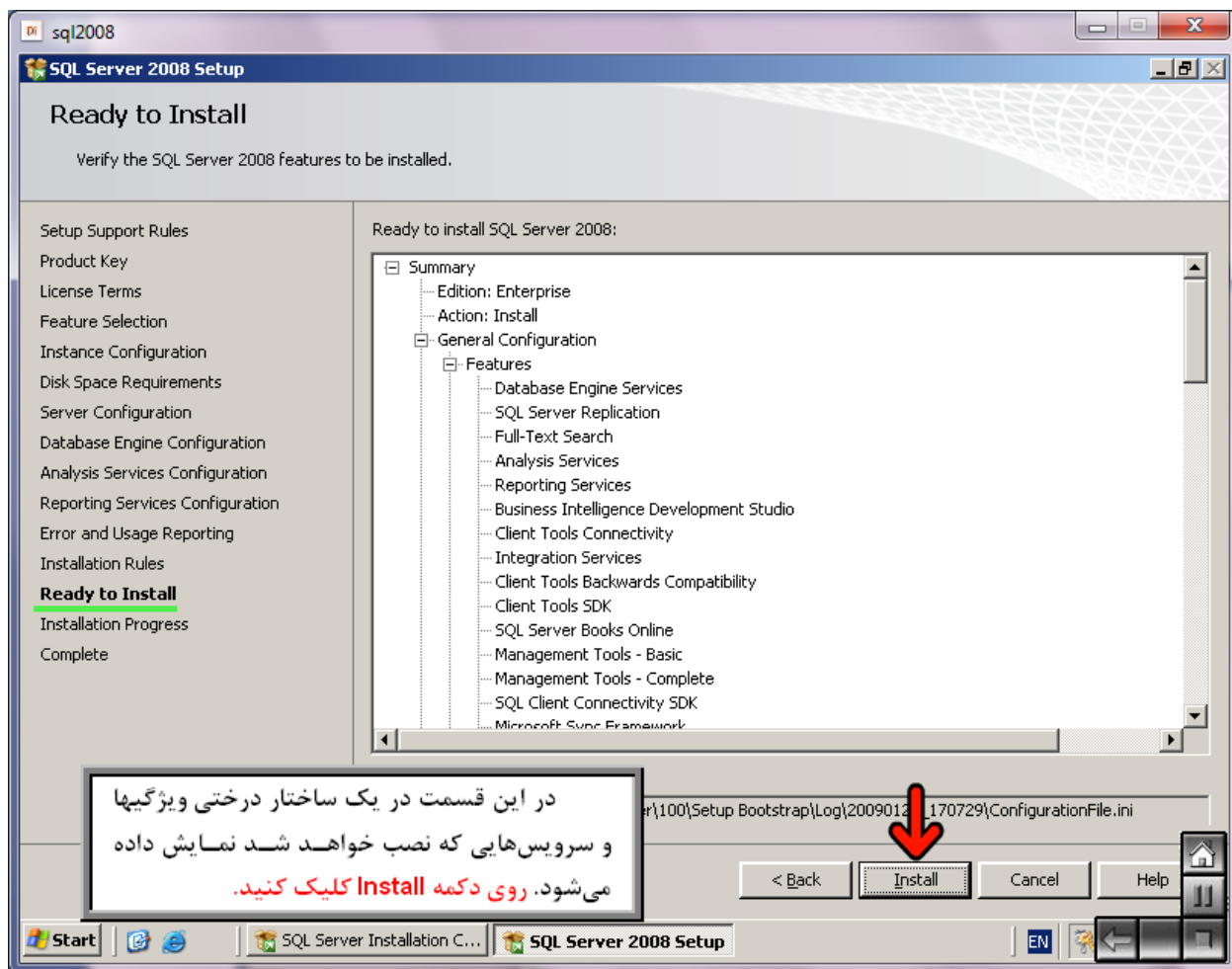
Hide details <<

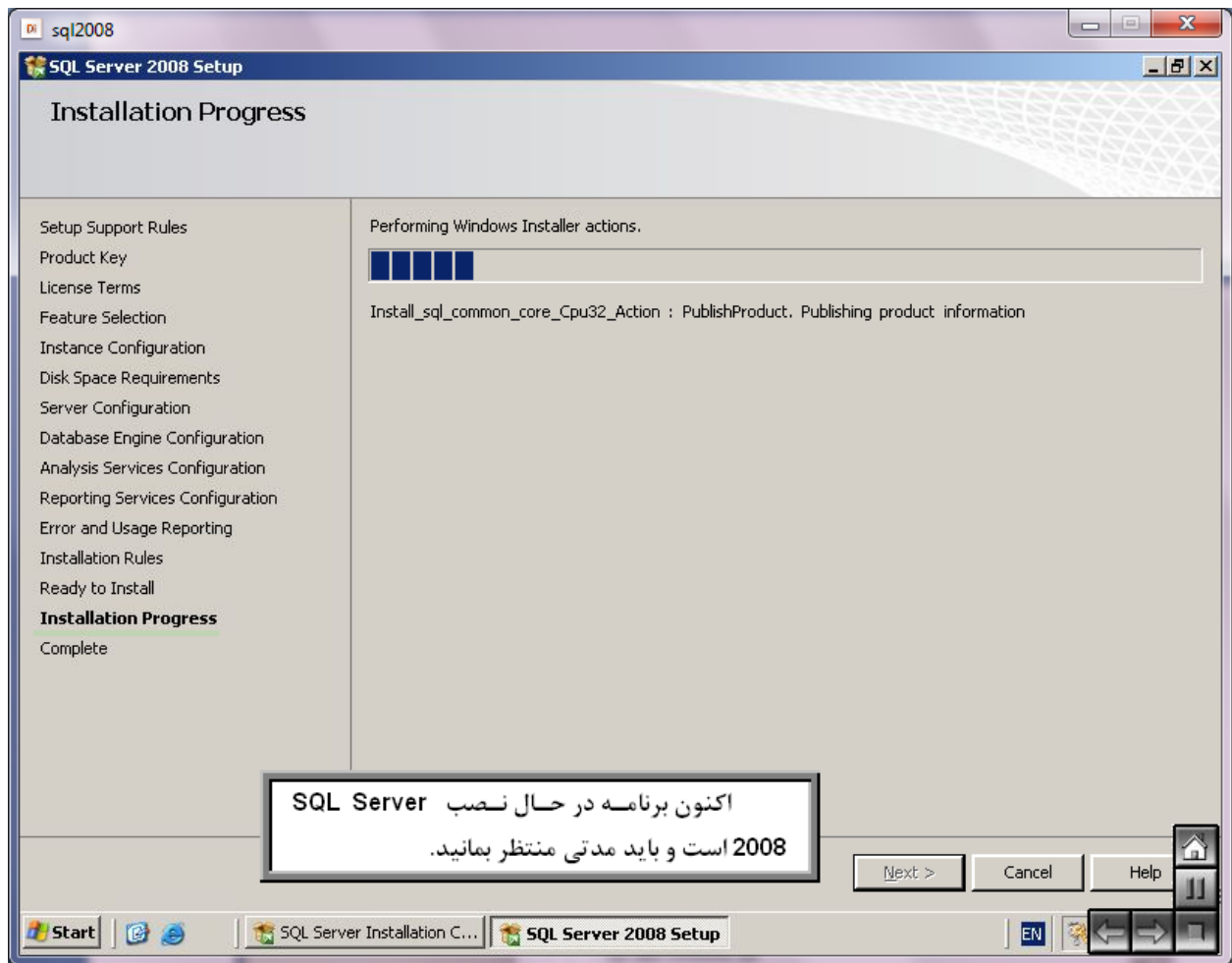
[View detailed report](#)

Rule	Status
Same architecture installation	Passed
Cross language installation	Passed
Existing clustered or cluster-prepared instance	Passed
Reporting Services Catalog Database File Existence	Passed
Reporting Services Catalog Temporary Database File Existence	Passed
SQL Server 2005 Express tools	Passed
Operating system supported for edition	Passed
FAT32 File System	Passed
SQL Server 2000 Analysis Services (64-bit) install action	Passed
Instance name	Passed
Previous releases of Microsoft Visual Studio 2008	Passed

< Back **Next >** Cancel Help

Start SQL Server Installation C... SQL Server 2008 Setup EN





sql2008

SQL Server 2008 Setup

Installation Progress

Setup Support Rules
Product Key
License Terms
Feature Selection
Instance Configuration
Disk Space Requirements
Server Configuration
Database Engine Configuration
Analysis Services Configuration
Reporting Services Configuration
Error and Usage Reporting
Installation Rules
Ready to Install
Installation Progress
Complete

Setup process complete

Feature Name	Status
Database Engine Services	Success
SQL Server Replication	Success
Full-Text Search	Success
Analysis Services	Success
Reporting Services	Success
Integration Services	Success
Client Tools Connectivity	Success
Management Tools - Complete	Success
Client Tools SDK	Success
Compatibility	Success
Development Studio	Success
	Success

عمل نصب به پایان رسیده و لیست ویژگیها و سرویسهایی که نصب شده است مشخص گردیده در صورتی که سرویسی به درستی نصب نشده باشد در این قسمت مشخص می شود. روی دکمه **Next** کلیک کنید.

Next > Cancel Help

Start | SQL Server Installation C... | SQL Server 2008 Setup | EN

sq|2008

SQL Server 2008 Setup

Complete

Your SQL Server 2008 installation completed successfully.

Setup Support Rules
Product Key
License Terms
Feature Selection
Instance Configuration
Disk Space Requirements
Server Configuration
Database Engine Configuration
Analysis Services Configuration
Reporting Services Configuration
Error and Usage Reporting
Installation Rules
Ready to Install
Installation Progress
Complete

Summary log file has been saved to the following location:
G:\Program Files\Microsoft SQL Server\100\Setup Bootstrap\Log\20090126_170729\Srv2003_20090126_170729.txt

Information about the Setup operation or possible next steps:

✔ Your SQL Server 2008 installation completed successfully.

Supplemental Information:

The following notes apply to this release of SQL Server only.

Microsoft Update
For information about how to use Microsoft Update to identify updates for SQL Server 2008, see the Microsoft Update website at <http://go.microsoft.com/fwlink/?LinkId=108409>.

Close Help

EN

با کلیک بر روی آدرس Summary Log می توانید فایل Log نصب یا مراحل و نتیجه نصب هر کدام از ویژگیها و سرویسها را مشاهده کنید. روی دکمه Close کلیک کنید.

