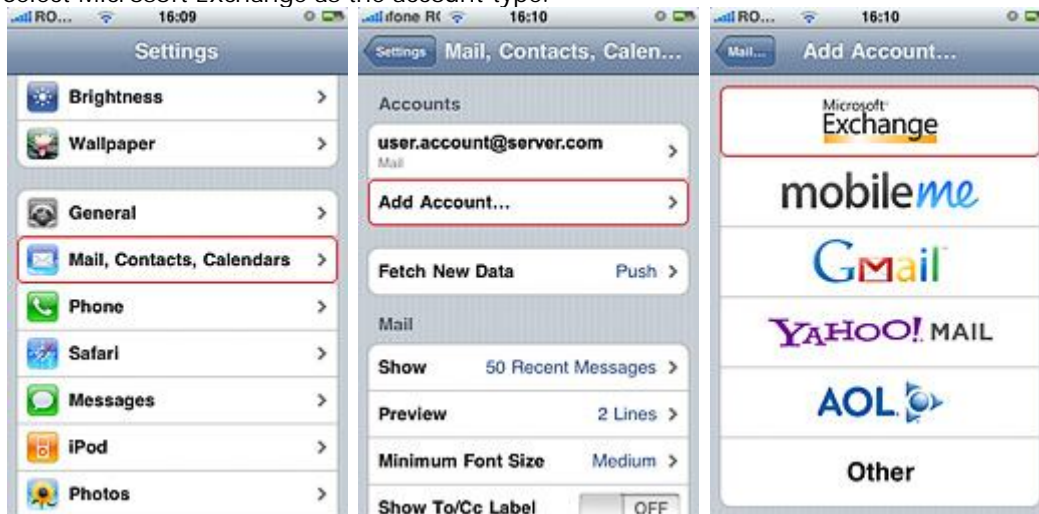


# Setup Axigen Mobile Sync

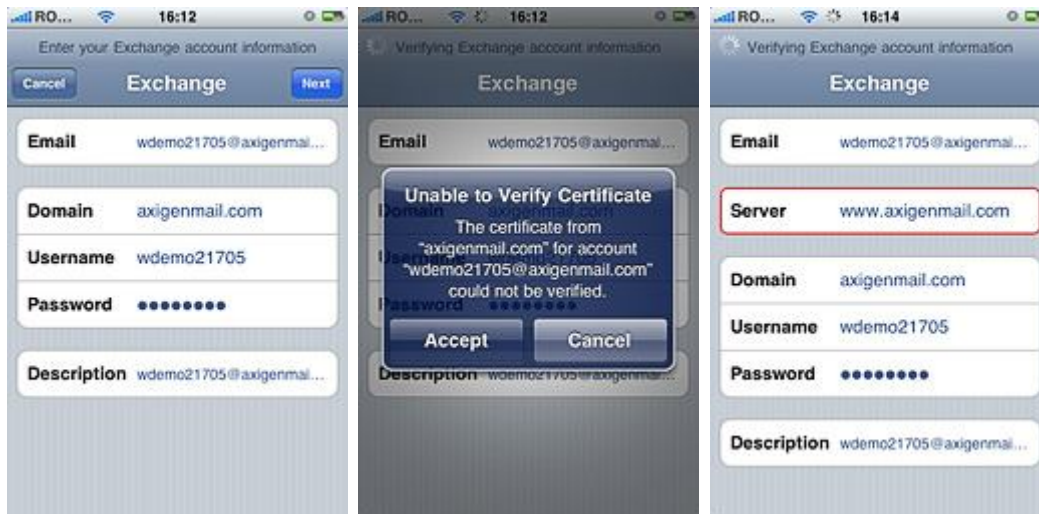
General note: before you start, we strongly recommend that you back up the data on your mobile phone by using the backup solution provided by the manufacturer of your mobile device.

## iPhone

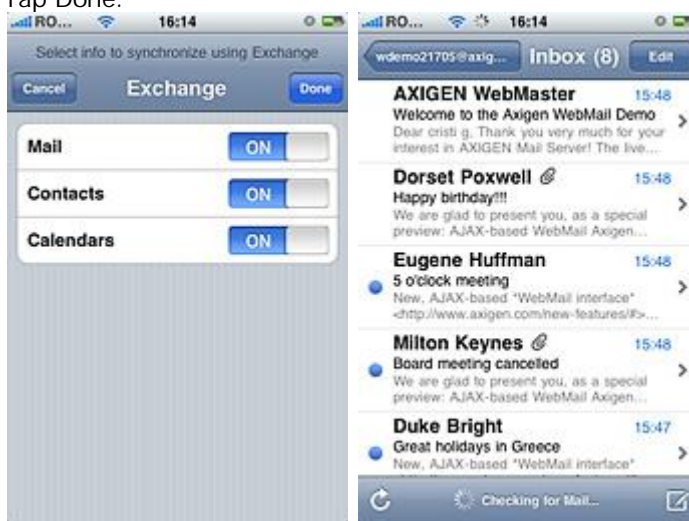
1. Go to Settings -> Mail, Contacts, Calendars.
2. In the Accounts field -> Tap Add Account.
3. Select Microsoft Exchange as the account type.



4. Enter your account details:
  - o Email: your email address (i.e. account\_name@shahroodut.ac.ir);
  - o Domain: [webmail.shahroodut.ac.ir](http://webmail.shahroodut.ac.ir) ;
  - o Username: your Shahrood University EMail account name, not email address (i.e. account.name, not account.name@shahroodut.ac.ir);
  - o Password: your Shahrood University EMail account password;
  - o Tap Next, then Accept if the Unable to verify certificate dialog appears;
  - o Fill in the Server field with: [webmail.shahroodut.ac.ir](http://webmail.shahroodut.ac.ir);
  - o Press Next.



5. Check to see if the connection test succeeds.
6. Select the categories of data that you want to synchronize between your iPhone and your EMail account (Mail/ Calendar / Contacts).
7. Tap Done.



## Nokia (using Mail for Exchange)

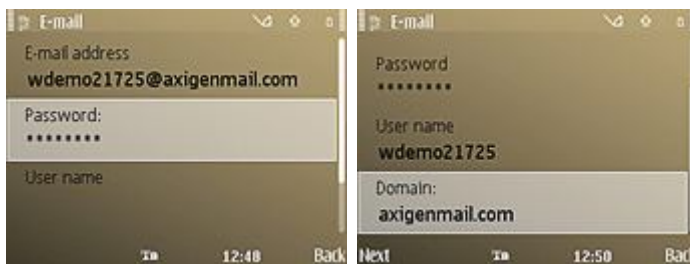
1. Open the Mail for Exchange application.
2. Choose to create profile.
3. Enter the Connection settings:
  - o Server address: [webmail.shahroodut.ac.ir](http://webmail.shahroodut.ac.ir);
  - o Secure connection: Yes;
  - o Access point: select one of your predefined GSM/WLAN access points;

- o Use default port: Yes.



4. Fill in the Credentials settings:

- o Username: your Shahrood University EMail account name, not email address (i.e. account. name, not account.name@shahroodut.ac.ir);
- o Password: your Shahrood University EMail account password;
- o Domain name: [webmail.shahroodut.ac.ir](http://webmail.shahroodut.ac.ir) ;

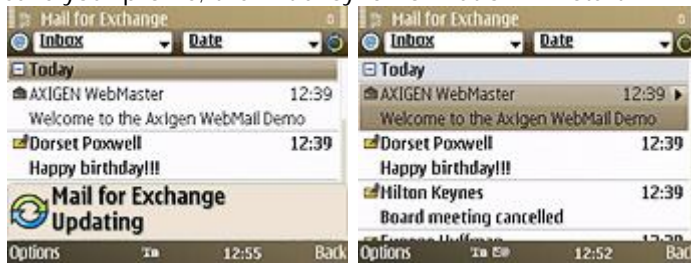


5. Under Sync content, you can select the categories of data that you want to synchronize between Nokia and your EMail account: Email / Contacts / Calendar / Tasks.
6. Sync schedule allows you to schedule automatic synchronization. Choose the Always on option if you wish to use the Push email functionality.
7. For each category of data that you want to synchronize, Initial sync gives you two options:
  - o Delete from phone: deletes all the items on your mobile device and replaces them with the ones from the server;
  - o Keep on phone: merges all the (phone and server) items.



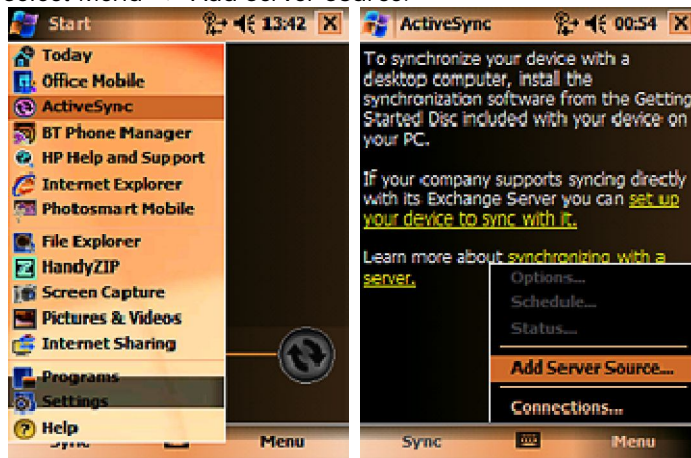
8. Select Back when the configuration process is completed.

- Save your profile; the initial synchronization will start.



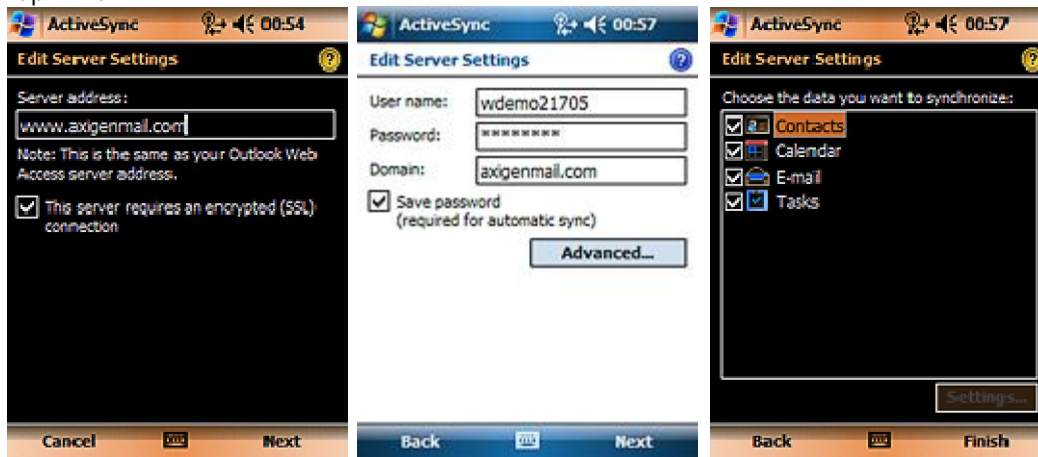
## Windows Mobile devices

- Go to Start -> ActiveSync® or Start -> Programs -> ActiveSync® (depending on the device).
- Select Menu -> Add Server Source.



- Enter the server settings:
  - Server address: [webmail.shahroodut.ac.ir](http://webmail.shahroodut.ac.ir);
  - Check the This server requires an encrypted (SSL) connection option;
  - Tap Next when done.
- Fill in your account details:
  - User name: your Shahrood University EMail account name, not email address (i.e account.name, not account.name@shahroodut.ac.ir);
  - Password: your Shahrood University EMail account password;
  - Domain: [webmail.shahroodut.ac.ir](http://webmail.shahroodut.ac.ir);
  - Tap Next.
- Select the categories of data that you want to synchronize between WM6 and the WebMail Demo account. All of the 4 options (Email / Contacts / Calendar / Tasks) are enabled by default.

6. Tap Finish.



7. Your data is now synchronized.

